

System Center Configuration Manager What's (v)next...

Partner:  Microsoft ***Computerworld***

DIGICOMP



Roger Zander
itnetX AG, Workplace Solutions

Microsoft MVP: Enterprise Client Management
Author: Client Center, Collection Commander,
RuckZuck....

Contact Me

Twitter: https://twitter.com/roger_zander

Blog: <https://rzander.azurewebsites.net/>

Mail: roger.zander@itnetx.ch

About me...



vNext Feature Overview

- Site Requirements
- Updates and Servicing
- Software Center improvements
- Windows10 Management
- Mobile Application Management

Requirements / Support

- Support for SQL 2014 Server AlwaysOn
- Removed and Deprecated Features for Configuration Manager
 - <https://technet.microsoft.com/en-US/library/mt210917.aspx>
 - Network Access Protection (NAP)
 - Site Server: SQL Server 2008 (not R2)
 - Site Server: Server 2008 + R2 (Support removed RTM + 12 months)
 - Client OS: Vista, Server 2003 R2

Updates and Servicing

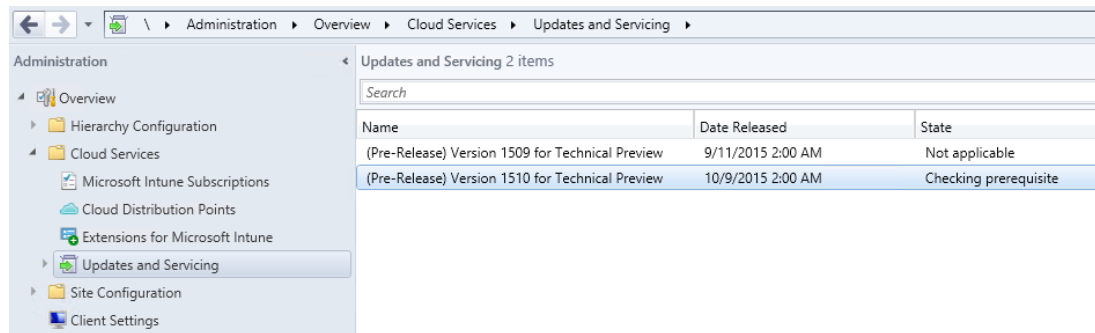
■ Provides Updates and Fixes for:

- Site Server
- SMS_Provider
- ConfigMgr Consoles
- ConfigMgr Clients

■ Updates are cumulative (typically)

■ When an update is found, Configuration Manager will automatically download the update.

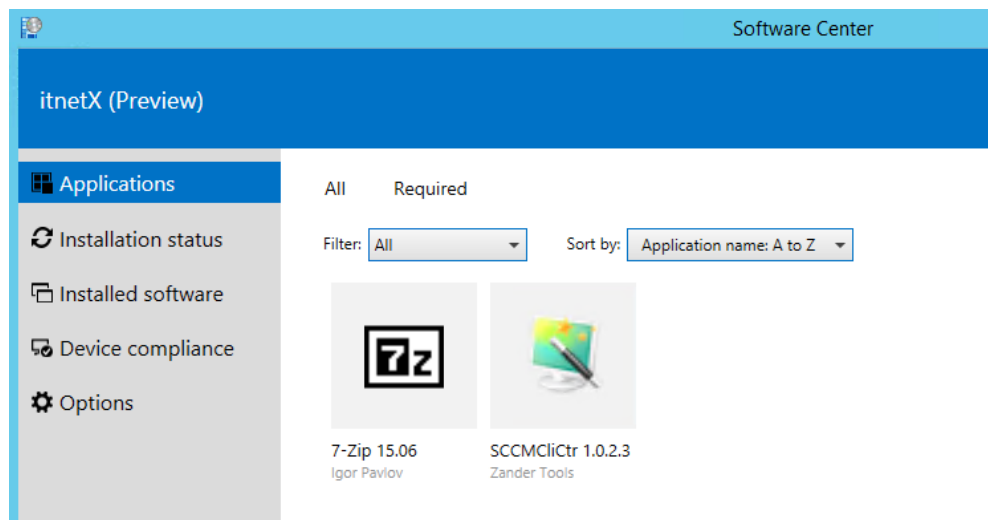
■ Client piloting to preproduction



Name	Date Released	State
(Pre-Release) Version 1509 for Technical Preview	9/11/2015 2:00 AM	Not applicable
(Pre-Release) Version 1510 for Technical Preview	10/9/2015 2:00 AM	Checking prerequisite

Software Center Improvements

- Application catalog is part of Software Center !!!!
- Deploy Windows Business Store applications
 - .appx File and offline license ({GUID}.bin) file required



Windows10 Management

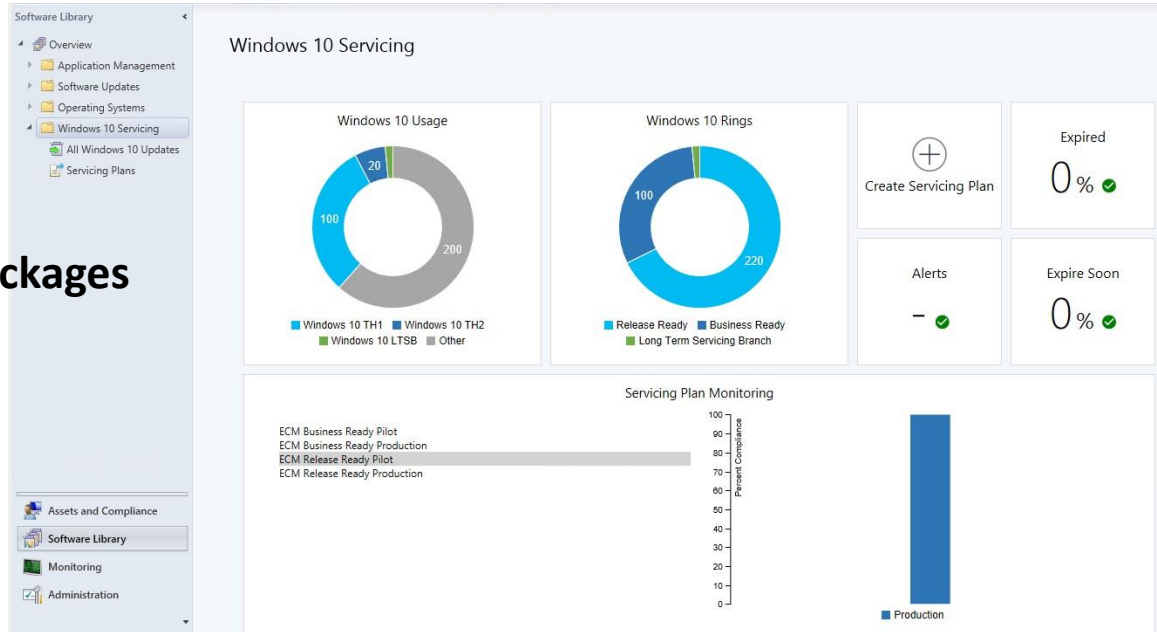
- **Windows 10 servicing dashboard**

- **Monitor Windows10 Builds and get Alerts if machines are end of support (CB and CBB)**

- **Windows10 in-place upgrade**

- **Check for requirements**

- **Pre-cache OS Images and Packages**

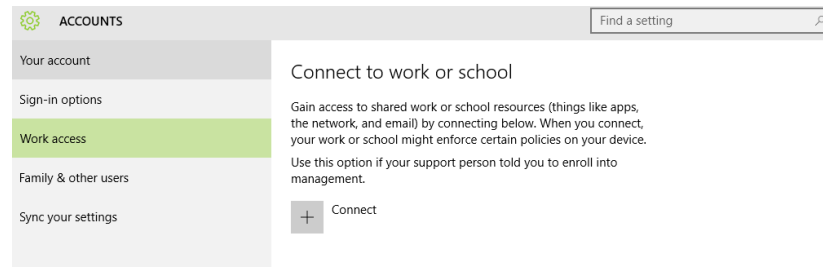


Other Features

- Cluster aware Update
 - Each Cluster = 1 Collection
 - Define % of Servers that must be online
 - Pre- and Post-Deployment PowerShell scripts
 - E.g. Node drain and Node resume Script
- WSUS Cleanup Script
- Windows PE Peer Cache support
- Support for Microsoft Azure virtual machines
- Support for multiple deployments on ADR

MDM Features

- On-premise MDM (Windows10 + Win10 Phone only)
 - With on-premises mobile device management, you can manage devices that do **not** connect to the Internet or that are limited to accessing a few Internet resources
 - Requires you to use a Microsoft Intune subscription (changed in TP2)
 - Bulk enrollment of Windows10
- Data protection for mobile devices
 - Passcode reset. Remote lock
- MDM configuration items (e.g. Password Quality)



Questions



T H A N K

Y O U

T H A N K

Y O U

Nächster CMCE R2SP1 Event 2.2.16 Dienstag

