



# Roger Zander

Consultant/ MVP

itnetX AG

[roger.zander@itnetx.ch](mailto:roger.zander@itnetx.ch) ; [roger@zander.ch](mailto:roger@zander.ch); [@roger\\_zander](https://www.linkedin.com/in/@roger_zander)

<https://rzander.azurewebsites.net/>

## Update Management A..Z



Configuration Manager

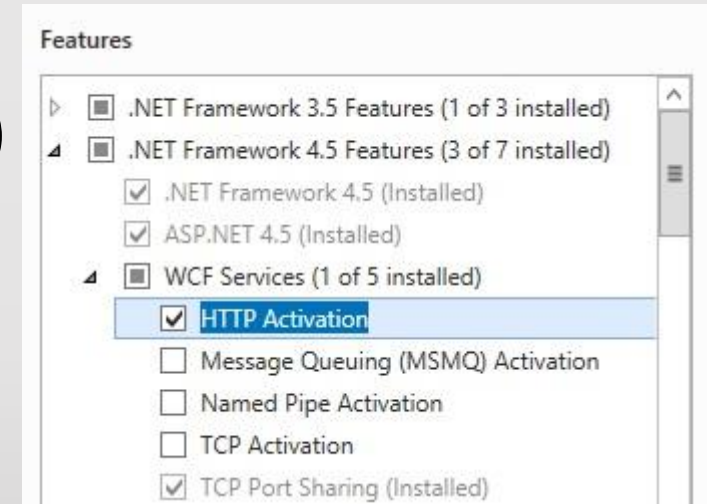
# Update Management



- WSUS
  - Architecture / Requirements
  - Setup
  - Optimizing / Troubleshooting
- UpdateMgmt with ConfigMgr
  - Best Practices
  - Automate
  - Troubleshooting

# WSUS Requirements

- Server 2012 R2, with April14 rollup  
(<https://support.microsoft.com/en-us/kb/2919355> )
- .NET 4.5 with “HTTP Activation” Feature enabled
- Windows10 Support:  
<https://support.microsoft.com/en-us/kb/3095113>
- ESD decryption (Win10):  
<https://support.microsoft.com/en-us/kb/3159706> -> PostInstall !!



# WSUS

- Internal DB vs. SQL
  - Internal DB not supported for NLB
  - You cannot run the SQL Server service under a local **non-system** account or by using SQL Server authentication. WSUS supports Windows authentication only.
- Port 80 vs. 8530 / default vs. custom website
- HTTP vs. HTTPS
- Multiple SUP's
  - Share Database within the same AD forest.

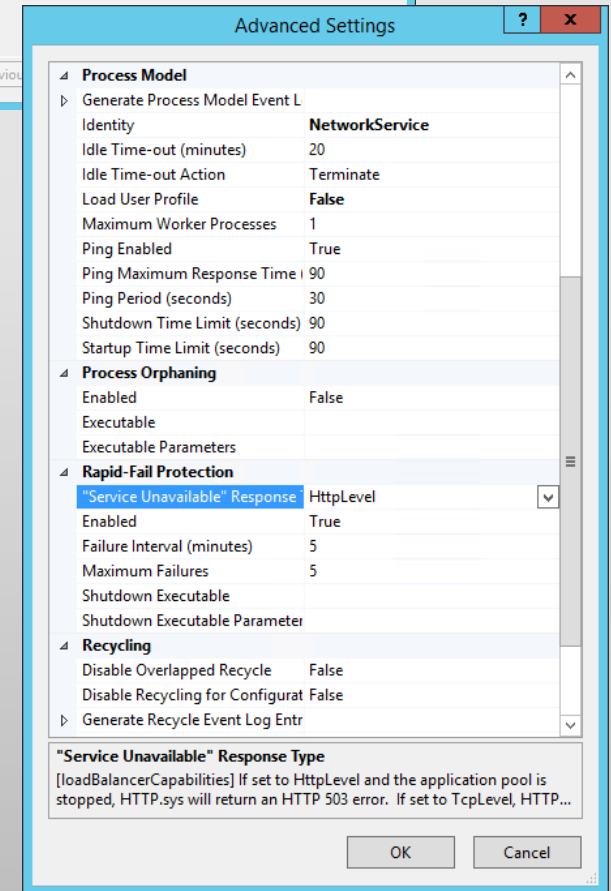
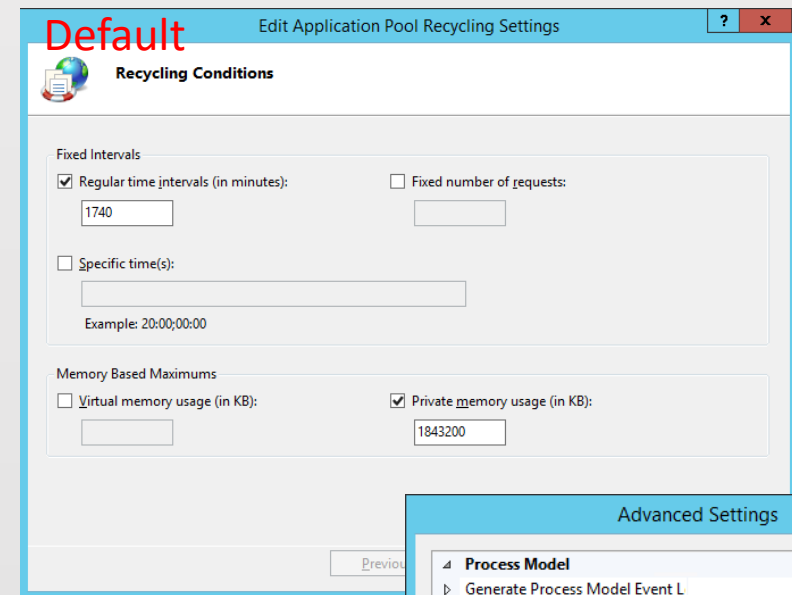
# WSUS

- GPO Settings [https://technet.microsoft.com/en-us/library/gg712312.aspx#BKMK\\_GroupPolicy](https://technet.microsoft.com/en-us/library/gg712312.aspx#BKMK_GroupPolicy)
  - SCUP: Allow signed content from intranet Microsoft update service location
  - SCUP: SCUP Cert must be in “Trusted Publishers”
  - What happens when SCCM Agent does not get Policy ? -> WUA Settings
  - GPO Settings will override SCCM Settings
  - When Automatic Updates **is enabled** on client computers, the WUA automatically performs a **self-update** when a newer version becomes available **or when there are problems with a WUA component**.  
When Automatic Updates **is not configured or is disabled**, and client computers have an earlier version of the WUA, the client computers must run the WUA installation file.

# WSUS

- Recycling Intervals
- Max. Memory
- Queue length
- NUMA (Non-uniform memory access)
  - Set Maximum Worker Process to 0
- Rapid-Fail Protection

[https://blogs.msdn.microsoft.com/the\\_secure\\_infrastructure\\_guy/2015/09/02/windows-server-2012-r2-wsus-issue-clients-cause-the-wsus-app-pool-to-become-unresponsive-with-http-503/](https://blogs.msdn.microsoft.com/the_secure_infrastructure_guy/2015/09/02/windows-server-2012-r2-wsus-issue-clients-cause-the-wsus-app-pool-to-become-unresponsive-with-http-503/)



# WSUS

- Backup/Restore
  - SUSDB is not part of SCCM backup !
  - SCCM Restore: Set CatalogVersion  
<https://rzander.azurewebsites.net/query-to-get-mincatalogversion-from-sccm-updates/>
- Maintenance
  - Decline (from the top of the hierarchy)
  - Cleanup (remove from the bottom of the hierarchy !)
  - Do not Sync SUP's during maintenance !
- ReIndex (after Cleanup)

# WSUS Troubleshooting

- Verifying WSUS Server Settings:  
[https://technet.microsoft.com/en-us/library/cc708545\(v=ws.10\).aspx](https://technet.microsoft.com/en-us/library/cc708545(v=ws.10).aspx)
- %root%\WSUS\WSUSContent
  - %root% -> Read permission for Users or «Network Service»
  - WSUS\WSUSContent -> Full Control for «Network Service»
- C:\Program Files\Update Services\Tools\WSUSUtil.exe
  - Checkhealth
  - Reset -> Download EULA's
  - Postinstall (SQL\_INSTANCE\_NAME=localhost  
CONTENT\_DIR=F:\WSUS )



# SCCM SUP

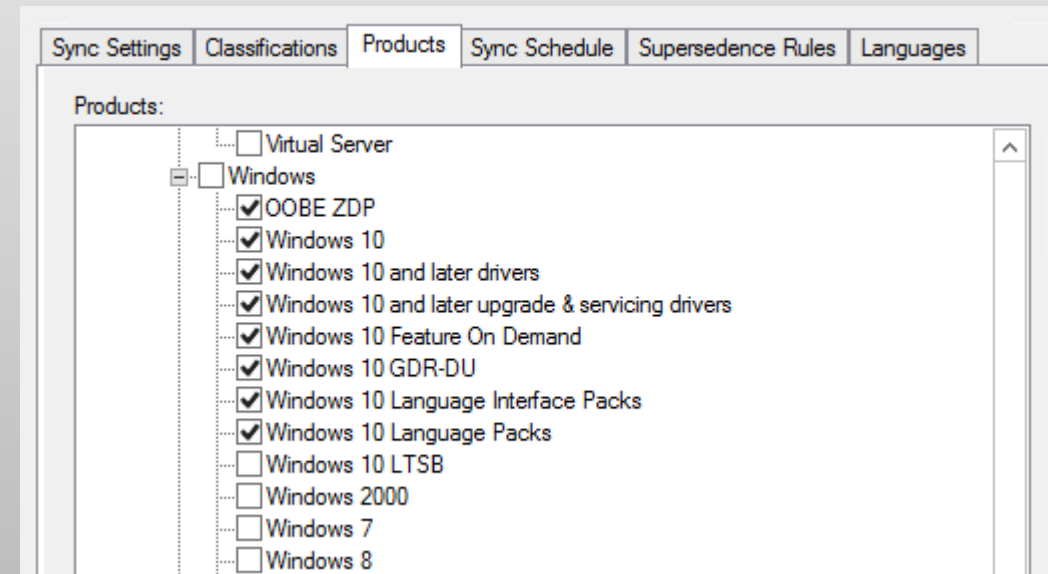
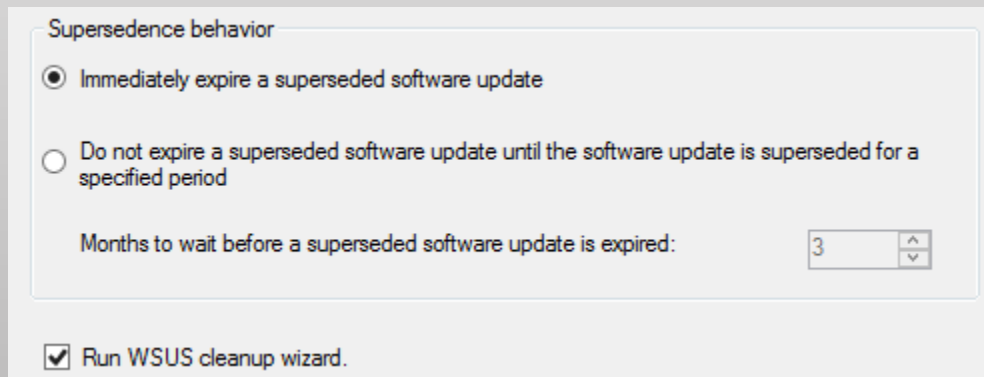
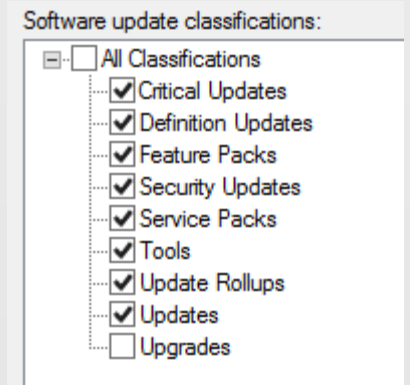
- Planning for Software Updates in Configuration Manager  
<https://technet.microsoft.com/en-us/library/gg712696.aspx>
  - 25'000 client per SUP, 1'000 updates in a deployment
- Update Scan
  - If the scan fails, the client waits 30 minutes to retry the scan from the same SUP
  - The client retries a minimum of four times... After the fourth failure and an additional two minutes, the client will move to the next SUP
- Software updates are **always downloaded** to the client cache **regardless** of the configured **maximum client cache size**

# SCCM SUP

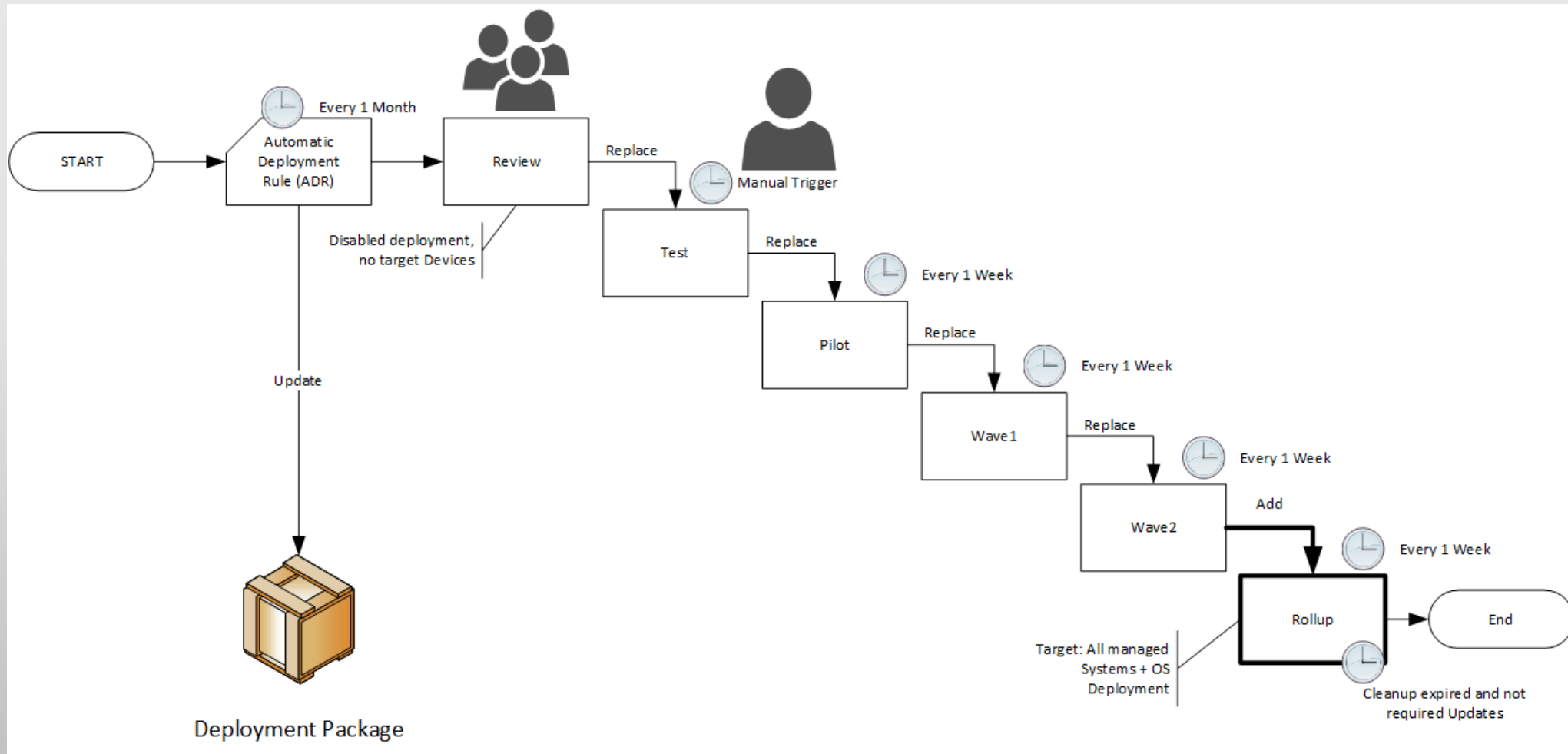
- Best Practices for Software Updates in Configuration Manager  
<https://technet.microsoft.com/en-us/library/hh692394.aspx>
  - Use a Shared WSUS Database for Software Update Points
    - You must also share the local WSUS content folders when you use a shared WSUS database.
  - Use a custom website for the WSUS installation
  - Separate SQL named Instance

# SCCM SUP

- Classification: Upgrades (Windows 10)
- OOBE ZDP and Windows10 GDR-DU
  - OOBE ZDP = ??? Fix vulnerabilities during OS install
  - GDR-DU = ??? (General Distribution Release-Dynamic Update)
- Supersedence Rules
- Sync Schedule -> Alert notification!

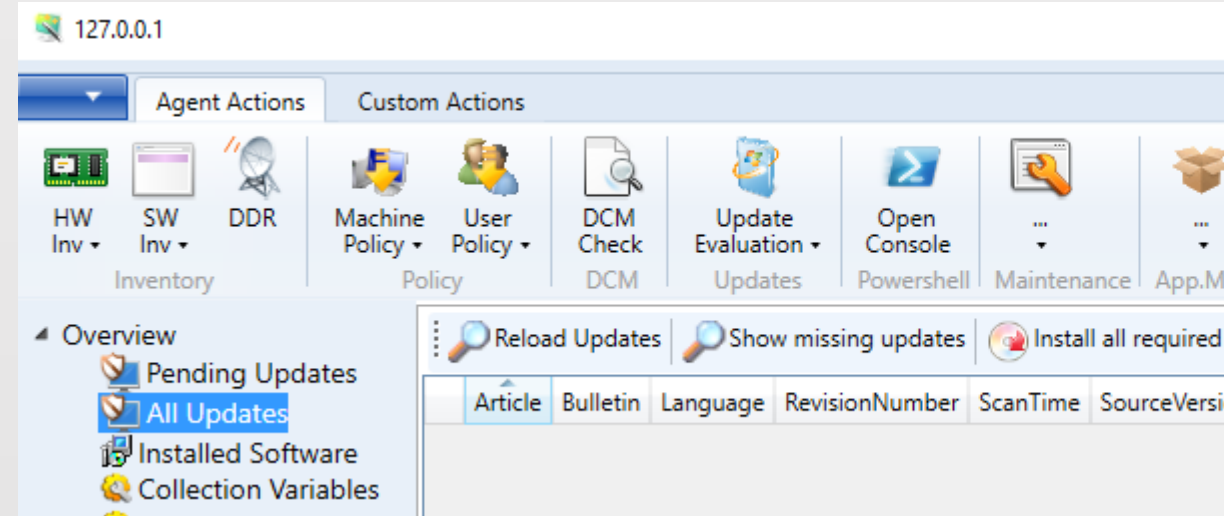


# SCCM Update Management



# SCCM Troubleshooting

- SUP Sync...
  - WSyncMgr.log
  - WSUSCtrl.log
  - WCM.log
- Client Side...
  - WindowsUpdate.log ; Win10: Get-WindowsUpdateLog



<https://rzander.azurewebsites.net/exclude-patches-from-update-deployment-in-sccm/>

<https://rzander.azurewebsites.net/query-to-get-mincatalogversion-from-sccm-updates/>

# Share your ideas



- Share your voice / ideas!
  - <http://microsoftintune.uservoice.com/>
  - <http://configurationmanager.uservoice.com/>



# Weitere Infos



## Digicomp Kurse

<https://www.microsoft.com/learning/en-us/course.aspx?ID=20695A&Locale=en-us>

<https://www.microsoft.com/learning/en-us/course.aspx?ID=20696c&Locale=en-us>

<https://www.microsoft.com/en-us/learning/course.aspx?cid=20398a&loc=en-us>

<https://www.microsoft.com/en-us/learning/course.aspx?cid=20697-2&loc=en-us>

# Danke



## Herzlichen Dank

Bewertung der Session: [Configmgr.ch](https://www.configmgr.ch) / [azureems.ch](https://www.azureems.ch)

- Xing: <https://www.xing.com/net/cmce>
- Facebook: <https://www.facebook.com/groups/411231535670608/>
- LinkedIn: <http://www.linkedin.com>
- Twitter: [https://twitter.com/configmgr\\_ch](https://twitter.com/configmgr_ch)



baseVISION

**RealStuff**  
Informatik AG

**DIGICOMP**

Nächster Event: Freitag 7. Oktober Digicomp Zürich